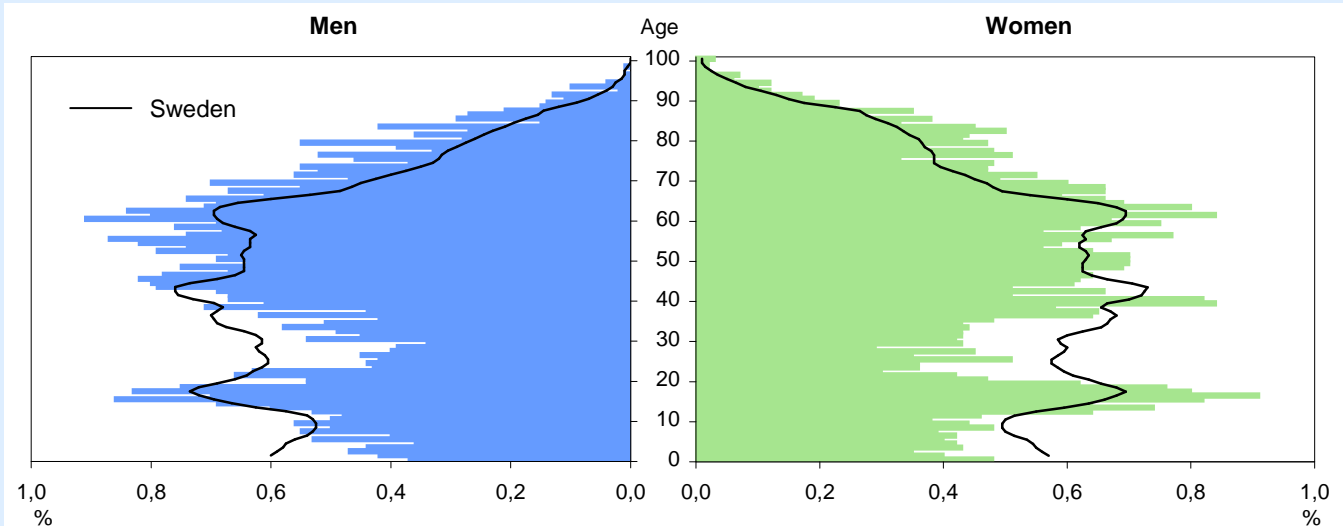


Emmaboda Municipal facts

Land area: 692 sq km

Inhabitants/sq km: 14

Population by age, 2007



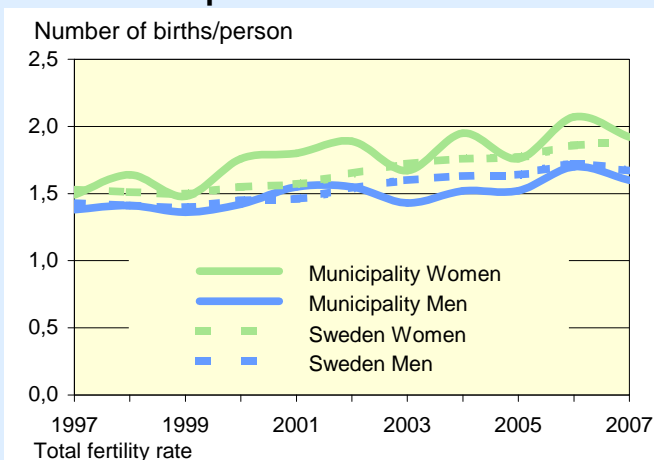
Population by age, 2007

Age	Percentage distribution Municipality			Sweden		
	M	W	Tot	M	W	Tot
0–6	6	6	6	8	8	8
7–15	10	10	10	11	10	10
16–19	6	6	6	6	5	6
20–24	5	4	5	6	6	6
25–44	22	21	21	27	26	27
45–64	30	28	29	26	26	26
65–79	16	16	16	12	13	12
80–	6	9	7	4	7	5
Total, %	100	100	100	100	100	100
Total (thou)	5	5	9	4 564	4 619	9 183
Antal	4 768	4 615				

Population trends, 1997–2007

Year (31 Dec.)	Population Number	Excess of births over deaths	Net migration	
			M	W
1997	10 098	-57	-35	-52
1998	9 971	-45	-51	-28
1999	9 811	-56	-52	-53
2000	9 772	-40	-3	4
2001	9 750	-52	5	26
2002	9 690	-62	-5	10
2003	9 659	-56	14	9
2004	9 643	-31	3	11
2005	9 543	-38	-39	-24
2006	9 436	-75	-28	-3
2007	9 383	-48	18	-26

Live births per woman/man



Migrations, 2007

	Men	Women
In-migration	211	213
within the county	55	64
from another county	128	111
from another country	28	38
Of which, ages 18–24	50	46
Out-migration	193	239
within the county	74	80
to another county	111	144
to another country	8	15
Of which, ages 18–24	56	77
Net migration	18	-26

Births and deaths, 2007

Number	Men	Women
Births	33	45
Deaths	72	54

Foreign born, 2007

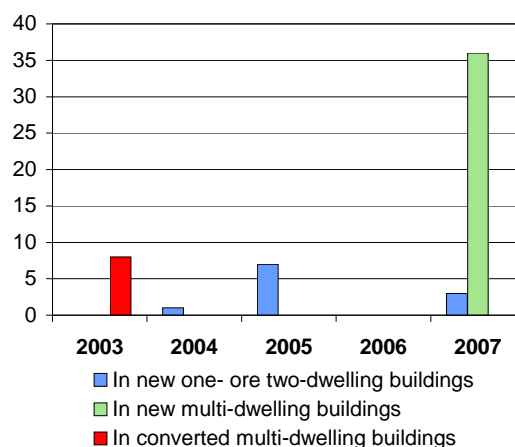
Prop. (%) of all inhabitants	M	W	Tot
Municipality	9	12	10
Sweden	13	14	13

Seats in the Municipal Council

Political party	Number of seats after the election			
	2002		2006	
	Men	Women	Men	Women
Moderate Party	2	2	3	2
Centre Party	4	2	6	2
Liberal Party	1	0	0	0
Christian Democratic Party	3	1	4	1
Green Party	1	0	0	1
Social Democratic Party	12	11	10	10
Left Party	1	1	2	0
Other parties	0	0	0	0
All parties	24	17	25	16

Completed/converted dwellings

Number of dwellings



Population by level of education, 31 December 2007

Level of education	Percentage distribution								
	Municipality			County			Sweden		
	M	W	Tot	M	W	Tot	M	W	Tot
Compulsory schooling	26	18	23	22	15	18	17	13	15
Upper secondary	53	53	53	54	51	53	50	47	48
Post-secondary education	19	27	23	23	33	28	31	39	35
Unknown	1	1	1	1	1	1	2	1	2
Total, %	100	100	100	100	100	100	100	100	100
Total (1 000)	3	2	5	67	64	132	2 739	2 657	5 396

Refers to age group 20–64

Employed by age group, 2006

	Prop. (%) of all within ages		
	Men	Women	Total
Municipality			
20–24	75	57	67
25–44	87	79	83
45–64	81	72	77
20–64	83	74	79
County			
20–24	62	55	59
25–44	86	80	83
45–64	79	75	77
20–64	80	75	78
Sweden			
20–24	61	57	59
25–44	83	78	81
45–64	78	75	77
20–64	79	75	77

Refers to the night population

Night population:

residing in the municipality, regardless of workplace

Day population (jobs):

working in the municipality, regardless of residence

Employment by sector, 2006

	Night population		Day population	
	Men	Women	Men	Women
Municipality	2 374	1 912	2 806	1 844
Business sector	2 196	1 023	2 624	1 042
Public sector	178	889	182	802
County (1 000)	57	50	55	50
Business sector	49	23	47	23
Public sector	8	27	8	27
Sweden (1 000)	2 235	2 056	2 228	2 053
Business sector	1 889	1 084	1 882	1 082
Public sector	347	971	346	971

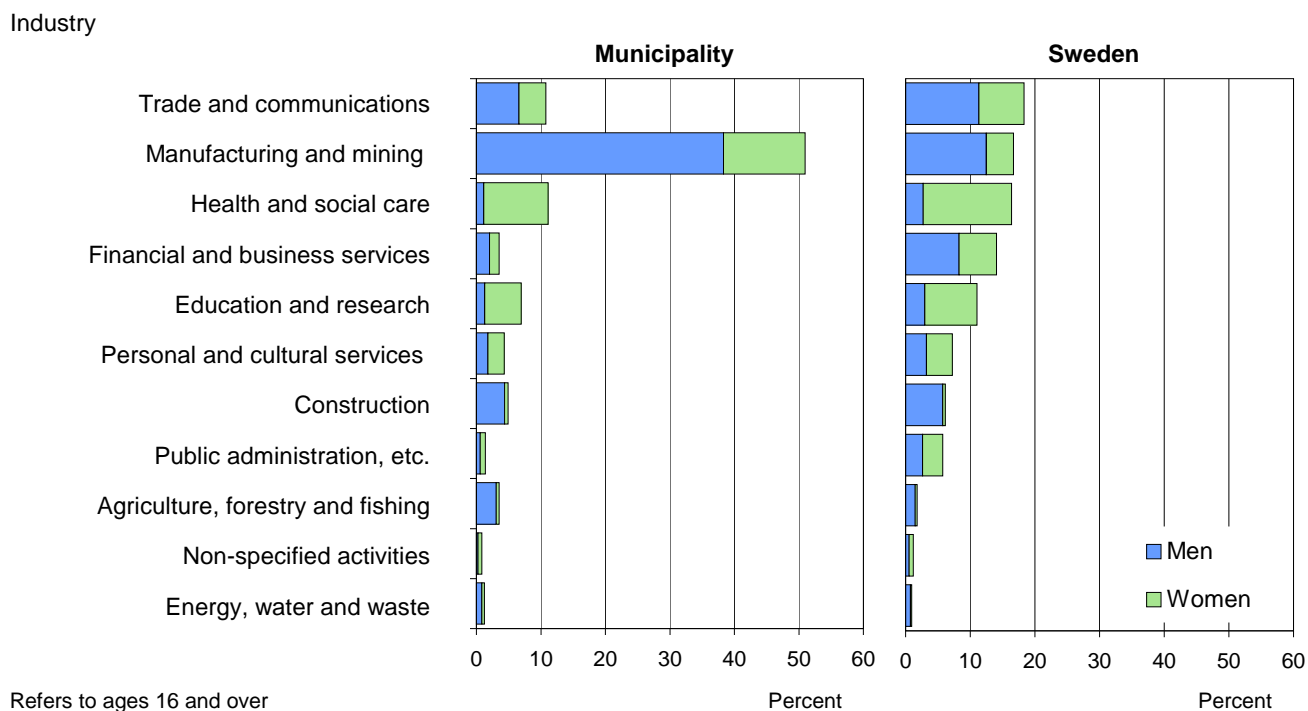
Number of persons ages 16 and over

Commuting, 2006

	Men	Women
Commuting in	879	372
within the county	425	214
from another county	454	158
Commuting out	447	440
within the county	195	203
to another county	252	237
Net commuting	432	-68

Number of persons ages 16 and over

Employment by industry, 2006



Self-employed, 2006

	Men		Women		Self-employed
	Self-empl. in lim.comp.	Self-employed	Self-empl. in lim.comp.	Self-employed	
1	10	140	4	71	71
2-4	37	22	9	12	12
5-9	26	4	5	2	2
10-	35	1	3	0	0
Total	108	167	21	85	85

Number of persons ages 16 and over

Refers to the day population

Sickness/activity compensation, 2007

	Prop. (%) of all within ages		
	Men	Women	Total
Municipality			
55-59	14	22	18
60-64	22	35	29
20-64	9	15	12
Sweden			
55-59	15	24	20
60-64	23	33	28
20-64	8	12	10

Replace benefits for disability pension and sickness

Job seekers

	Proportion (%) of all within age group								
	Municipality			County			Sweden		
	M	W	Tot	M	W	Tot	M	W	Tot
October, 2007									
Ages 20-64	2	3	3	3	4	3	4	4	4
Unemployed	1	2	2	2	2	2	3	3	3
Labour market progr.	1	1	1	1	1	1	1	1	1
Of which, ages 20-24	6	9	8	7	6	6	6	5	6
Number, ages 20-64	58	81	139	2 171	2 352	4 523	101 988	96 940	198 928
October, 2008									
Ages 20-64	4	4	4	4	4	4	4	4	4
Unemployed	3	2	2	3	3	3	3	3	3
Labour market progr.	1	1	1	1	1	1	1	1	1
Of which, ages 20-24	11	7	9	8	7	7	7	5	6
Number, ages 20-64	96	87	183	2 587	2 674	5 261	111 783	103 442	215 225

Employment and employed, 2006 – Total

Industry	Day population				Night population			
	Municipality	County	Sweden	Municipality	County	Sweden		
	Number	%	%	%	Number	%	%	%
Agriculture, forestry and fishing	165	4	4	2	148	3	4	2
Manufacturing and mining	2 373	51	23	17	1 846	43	23	17
Energy, water and waste	59	1	2	1	59	1	2	1
Construction	230	5	6	6	211	5	6	6
Trade and communications	504	11	15	18	525	12	16	19
Financial and business services	166	4	8	14	220	5	8	14
Education and research	325	7	11	11	346	8	11	11
Health and social care	519	11	19	16	598	14	19	16
Personal and cultural services	202	4	6	7	204	5	6	7
Public administration, etc.	66	1	5	6	91	2	5	6
Non-specified activities	41	1	2	1	38	1	2	1
Total	4 650	100	100	100	4 286	100	100	100
Refers to ages 16 and over								

Employment and employed, 2006 – Men

Industry	Day population				Night population			
	Municipality	County	Sweden	Municipality	County	Sweden		
	Number	%	%	%	Number	%	%	%
Agriculture, forestry and fishing	144	5	6	3	124	5	6	3
Manufacturing and mining	1 782	64	34	24	1 346	57	33	24
Energy, water and waste	39	1	3	1	37	2	3	1
Construction	204	7	11	11	184	8	11	11
Trade and communications	308	11	18	22	297	13	19	22
Financial and business services	94	3	8	16	126	5	9	16
Education and research	61	2	5	6	68	3	5	6
Health and social care	53	2	5	5	58	2	5	5
Personal and cultural services	82	3	5	6	88	4	5	6
Public administration, etc.	27	1	4	5	34	1	4	5
Non-specified activities	12	0	1	1	12	1	1	1
Total	2 806	100	100	100	2 374	100	100	100
Refers to ages 16 and over								

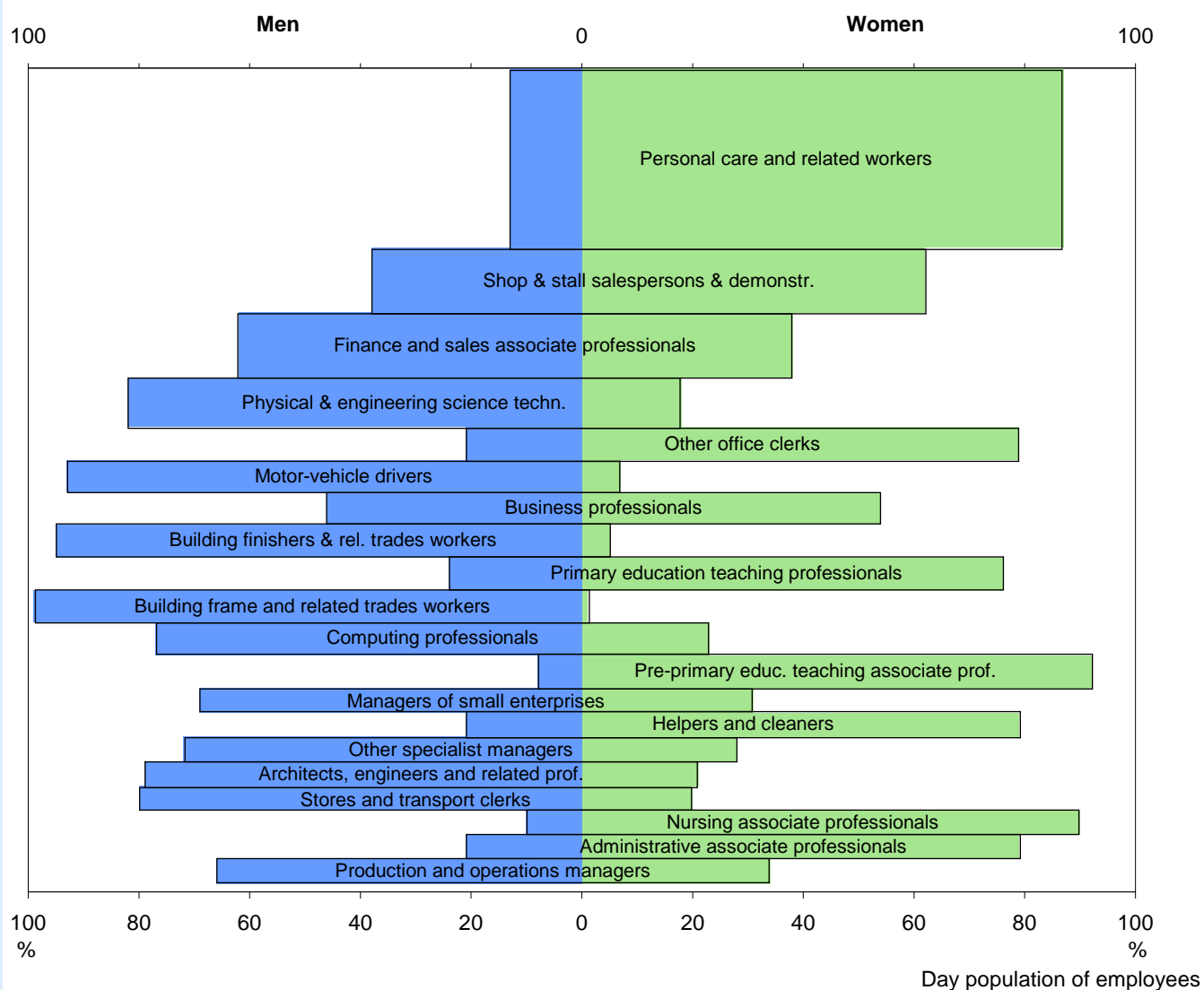
Employment and employed, 2006 – Women

Industry	Day population				Night population			
	Municipality	County	Sweden	Municipality	County	Sweden		
	Number	%	%	%	Number	%	%	%
Agriculture, forestry and fishing	21	1	1	1	24	1	1	1
Manufacturing and mining	591	32	12	9	500	26	11	9
Energy, water and waste	20	1	1	0	22	1	1	0
Construction	26	1	1	1	27	1	1	1
Trade and communications	196	11	13	15	228	12	13	15
Financial and business services	72	4	7	12	94	5	8	12
Education and research	264	14	17	17	278	15	17	17
Health and social care	466	25	34	29	540	28	34	29
Personal and cultural services	120	7	7	9	116	6	7	9
Public administration, etc.	39	2	5	7	57	3	5	7
Non-specified activities	29	2	2	1	26	1	2	1
Total	1 844	100	100	100	1 912	100	100	100
Refers to ages 16 and over								

The 20 most common occupations in the municipality, 2006

Day population of employees	Number		Perc.distr.			Sex distr. (%)		
	Men	Women	M	W	Tot	M	W	
Personal care and related workers		23	374	1	21	9	6	94
Assemblers	195		142	8	8	8	58	42
Metal- & mineral-products machine op.	275		23	11	1	7	92	8
Glass, ceramics and related plant operators	124		42	5	2	4	75	25
Wood-proc.- & papermaking-plant operators	141		8	5	0	3	95	5
Potters, glass-makers & rel. trades work.	81		51	3	3	3	61	39
Shop & stall salespersons & demonstr.	35		95	1	5	3	27	73
Metal-processing-plant operators	117		7	5	0	3	94	6
Physical & engineering science techn.	93		25	4	1	3	79	21
Other specialist managers	93		15	4	1	2	86	14
Primary education teaching professionals	26		79	1	5	2	25	75
Machinery mechanics and fitters	95		1	4	0	2	99	1
Finance and sales associate professionals	72		23	3	1	2	76	24
Transport labourers and freight handlers	64		30	2	2	2	68	32
Motor-vehicle drivers	89		4	3	0	2	96	4
Agricultural & other mobile-plant operators	87		1	3	0	2	99	1
Building finishers & rel. trades workers	82		5	3	0	2	94	6
Pre-primary educ. teaching associate prof.	4		78	0	4	2	5	95
Other machine operators and assemblers	71		6	3	0	2	92	8
Numerical clerks	4		69	0	4	2	5	95
Total 20 occupations	1 771		1 078	68	62	66	62	38
All occupations	2 599		1 742	100	100	100	60	40

The 20 most common occupations in the country, 2006



Child care, 2007

Enrollment	Municipality		Sweden
	Number	%	%
Pre-school, 1-5	317	80	80
Leisure time centre, 6-12	299	48	48
Family day care unit, 1-5	10	3	5
6-12	0	0	0
Pre-school class, age 6	76	99	96
Proportion (%) of all within age group			

Elder care, 2007

	Prop. (%) of all within group			
	Municipality		Sweden	
	M	W	M	W
Home-help services	13	25	17	25
Special housing	8	13	11	18
Transport service	11	20	28	43
Refers to ages 80 and over				

Total income, 2006

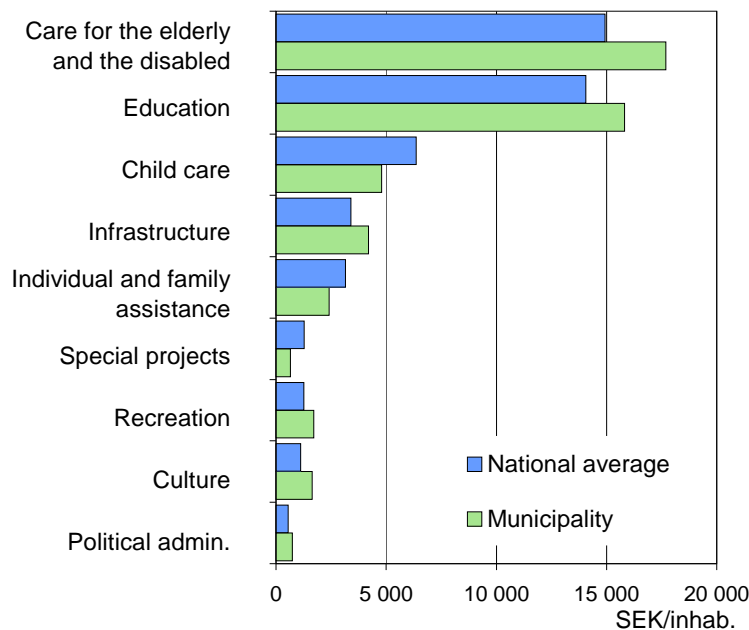
	SEK thousand		
	Men	Women	Total
Average income			
Municipality	270	189	232
County	256	193	225
Sweden	277	206	242
Median income			
Municipality	279	197	234
County	254	197	224
Sweden	261	205	230

Income from employ. and business, age gr. 20-64

Social assistance, 2007

Type of household	Recipient households		Sweden
	Municipality	%	
	Number	%	%
Cohabiting			
without children	11	7	6
with children	24	14	12
Single men			
without children	74	44	40
with children	5	3	3
Single women			
without children	32	19	24
with children	21	13	15
Total	167	100	100

Expenditures SEK, per inhabitant, 2007



Local taxes, 2008

Municipality	
Total local tax rate	31,83
of wich to municipality	21,62
Tax base, SEK/inhab.	147 579
Tax base, index	94

County average

Total local tax rate	32,10
of wich to municipality	21,89
Tax base, SEK/inhab.	144 156
Tax base, index	91

National average

Total local tax rate	31,44
of wich to municipality	20,71
Tax base, SEK/inhab.	157 764
Tax base, index	100

Index, Sweden = 100